

Displays, operator panels

Type	DI	RO	AI	AO	Comm
ID-18 (in to wall)					Ethernet
ID-28 (in to panel)					Ethernet

Basic features

- Graphic panel with touch screen
- Low power consumption, without cooling, without heating even in closed spaces, wide range of operation temperatures.
- Installed microbrowser, interprets directly built-in web pages of Foxtrot, TC700.
- **ID-18** is designed for installation in the wall, where is no access from other side. KO110/L installation box is the part of delivery.
- **ID-28** is designed for installation at the doors of control cabinets or in any place where it is the access from other side.
- Other features are the same for both panels.
- It is equipped with TFT display 5.7" with resolution 640×480 pixels (VGA).
- Front frame design – plastic with dimension 180×150 mm, white color. Other colors according to sampler after the order.

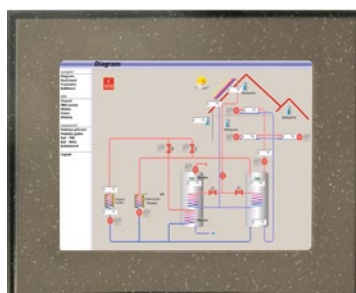
Connection

- Can be connected directly to the Foxtrot or over the LAN by UTP/RJ45 cable
- Power supply 24 V DC, power consumption up to 5 W with full backlight.

Use

- All places where we need graphics with high resolution, save space and low consumption.
- Designed especially for local displaying web pages stored in control systems Foxtrot, TC700, created in WebMaker.
- Designed for interiors as comfortable Room/House manager, both for administrative and residential buildings..

Examples of screens created in WebMaker



Communication

System I/O bus	Ethernet 10/100baseTX, IEEE 802.3
Galvanic isolation Communication	Yes

Operating conditions

Operating temperature	-20 ÷ +55 °C
Storage temperature	-30 ÷ +70 °C
Electric strength	according EN 60950
IP Degree of protection IEC 529	IP 10B
Overvoltage category	III
Degree of pollution IEC EN 60664-1:2004	2
Working position	any
Installation	Into installation box
Connection	Ethernet RJ45; Power supply with screw terminals
Conductors cross-section	max. 2.5 mm ²

Screen

Display type	Full color TFT LCD
Display size	5.7" (180×150 mm),
Resolution	VGA (640×480)
Keyboard	Touch screen

Dimensions and weight

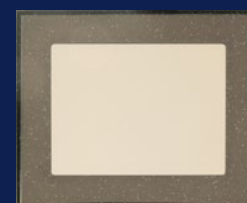
Dimensions	180×150×55 mm
Weight	1015 g

Power supply

Power supply voltage (SELV)	+24 V DC/200 mA
Allowed range	-15% +25% (20.4 ÷ 30 V DC)
Max. input power	5 W
Galvanic isolation of power supply	No

Order number

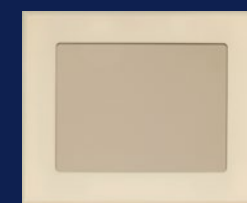
TXN 054 39	ID-18; 5.7" TFT 640×480; touch panel; 100/10 Ethernet; built-in into the wall
TXN 054 40	ID-28; 5.7" TFT 640×480; touch panel; 100/10 Ethernet; into electrical installation cabinet
TXN 054 42	D-18 Design; 5.7" TFT 640×480; touch panel; 100/10 Ethernet; built-in into the wall. It is necessary to complete with metallic front frame that has to be ordered separately according to RAL sampler.



ID-18



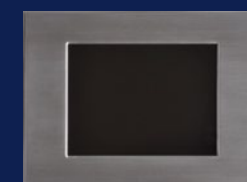
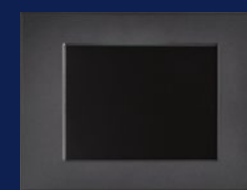
ID-18



ID-28



ID-28



ID-18 Design

according to RAL sampler